

# Missionary to ZAMBIA

Children's Ministries Agape Farm

Diane Gorham

PO Box 17330

Saint Paul, MN 55117

Email : [cmf1991@yahoo.com](mailto:cmf1991@yahoo.com)

Phone : 651.361.0564

July 10, 2023

Dear friends of Children's Ministries Agape Farm,

Greetings in the name of Jesus! We are excited to share with you how God has been working in and through Agape Farm over the past few months. Thanks to the ongoing generosity of donors and tireless efforts of our dedicated staff in Zambia, a few long-held dreams have become reality this year.

### ***We have a 4x4 truck!***

Traversing the farm in Mpongwe and surrounding villages can be quite a challenge, especially in the rainy season when dirt roads become rivers of mud. The most common form of transportation is on foot or bicycle as fewer than 10% of Zambians own vehicles. In February we were able to purchase a used 2015 4x4 truck for \$20,000! Used to transport building supplies, farming materials and ministry equipment for outreach events such as the Jesus Film and seminars, the new 4x4 is a great blessing! Currently we have 2 licensed drivers on staff. Pray along with us for more staff members to be equipped as drivers, a process involving months of study plus fees for testing & travel.

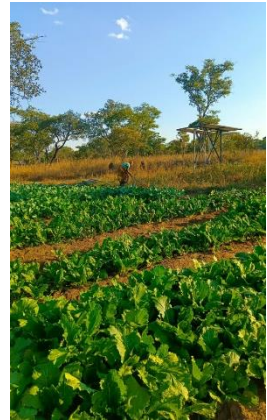


### ***We have running water!***

Since the bore holes were added last fall, the water expansion project continues to bring transformation to life at Agape. Two staff homes are now plumbed with running water to the shower, sink and toilet. The student toilets are 85% complete. In addition, two irrigation tanks have been installed, benefiting existing crops and enabling a new student garden. The new student garden has beans, sweet potatoes, maize, sunflower seeds, and oil. Students gain hands-on skills training at Agape Primary School.

As we witness the transforming power of natural water, Jesus' words from John 7:37-38 come to mind: *"... Jesus stood and said in a loud voice, 'Let anyone who is thirsty come to me and drink. Whoever believes in me, as Scripture has said, rivers of living water will flow from within them.' By this he meant the Spirit, whom those who believed in him were later to receive."*

We pray that as life and land are transformed by natural water, so the hearts of all who come to Agape will drink of the living water Jesus offers and experience spiritual transformation.



***We have 100 more students at Agape Primary School!***

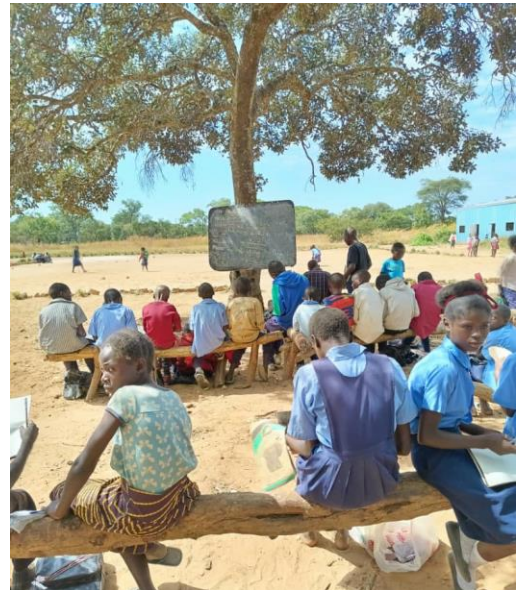
The school continues to expand with students now numbering near 400. In the dry season class is conducted outside, under the shade of a tree, as the tin structure normally used by the students becomes unbearably hot in the African sun.

God willing, as time and funds permit, we plan to add another brick school house as well as construct an open-air cafeteria, the beginning of which has already been started.

***Looking ahead...***

As the impact of CMAF continues to expand, its operating costs have also increased. Our monthly budget is now up to \$2500. We are believing God to provide for the ongoing needs. Your generous gifts enable us to consistently:

- Employ 15 staff members at a livable wage
- Fuel the new 4x4 truck and diesel flatbed
- Purchase seeds, plants and fruit trees for the gardens
- Maintain the feeding program to provide students with a nutritious lunch two times a week during the school year.



Will you consider becoming a monthly donor or making a one-time gift today? Donations can be made online at: <https://globalhz.org/childrens-ministries-agape-farm>. Or, to donate by check, make your gift payable to "Global Horizons" and note "Agape Farm" in the memo. The enclosed return envelope is provided for your convenience.

With gratitude for your generosity today and always,

Diane Gorham & Children's Ministries Agape Farm Committee  
(Mike and Martha Port, Mark and Gayle Stage, Mary Stage)