

[View this in your browser](#)



## **Update from the Botchways December 2024**

**Dear Family and Friends,**

Once again the season of Christmas is with us. "For to us a child is born, to us a son is given, and the government will be on his shoulders. And he will be called Wonderful Counselor, Mighty God, Everlasting Father, Prince of Peace. Of the greatness of his government and peace there will be no end"(Isaiah 9:6-7)

At Christmas, we celebrate the birth of Christ who is God's ultimate gift to mankind, a world fallen in sin. We embrace this gift and also with the expectation that one day we shall see Him as He is; the King of Kings and Lord of Lords. Christmas is also a special time of giving. For those who might be new to our ministry, if you are thinking of where your giving will touch others, we urge you to consider and join a group of people who are already making a difference by making a donation towards the ministry of Enrich Leadership Network.

### ***THANK YOU!***

We are truly thankful to God who has enabled us, because he counted us faithful, putting us into this ministry. Over the years, its because of your obedience and faithfulness to God that has enabled us to fulfill this assignment. It is your support in finances and prayers that has kept us going. We wake up everyday knowing that someone is thinking about us and praying for us. Your support has made it possible for us to travel to remote parts of our nation. We ply bad roads and have so far traveled to five Regions of our country. Your support has made it possible to train about 932 Pastors and leaders from 30 different denominations to be transformed and become agents of change.

### ***OUR TRAVELS***

In May, we had the opportunity to visit St Paul, Minnesota. It was a visit filled with good memories. We attended the graduation of our daughter in law who graduated with honors in the Dental Field at the University of Minnesota. We also attended the Christening of our fourth grandson at the Community of Nations Church in Roseville, Minnesota. I also had the opportunity to preach and brought report about our ministry to the Community of Nations Church.

As a routine, we visited our doctors for our annual health screen. There were some concerns which we had to take care of. Thank God my wife's annual screening went very by God's grace. I had some dental concerns which was also taken care of. Thanks be to God.

### ***GREAT OPPORTUNITY***

One of our members in our Church introduced us to a ministry in the Twin-Cities whose ministries serves around the world by supplying them with used Bibles, children and adult Sunday books. They also had a range of collection that covers Leadership, Christian living etc, We were blessed to be offered three boxes of books which I was hoping to ship with my luggage but unfortunately it was too expensive to ship by air, so we have shipped them by sea. We hope to receive them by March 2025.

### ***OUR SEMINARS***

Our Conferences and seminars have had great impact in the the lives of many pastors and leaders. In Aboaso, Kumasi the impact has been so exciting that next year, they are proposing hosting the meeting in the inner city which will make more pastors to attend. Thank you for those who prayed about the new region that we visited in October this year. This was a virgin land for us this year and faithfully God honored His Word moving with us to honor His Word. We had the biggest attendance since we begun our Conferences and Seminars. We had two days of Conference and the first day we had 114 people attend; and on the second day we had 104 which has been our highest attendance. *"PRAISE BE THE LORD"*.

### ***OUR NEEDS***

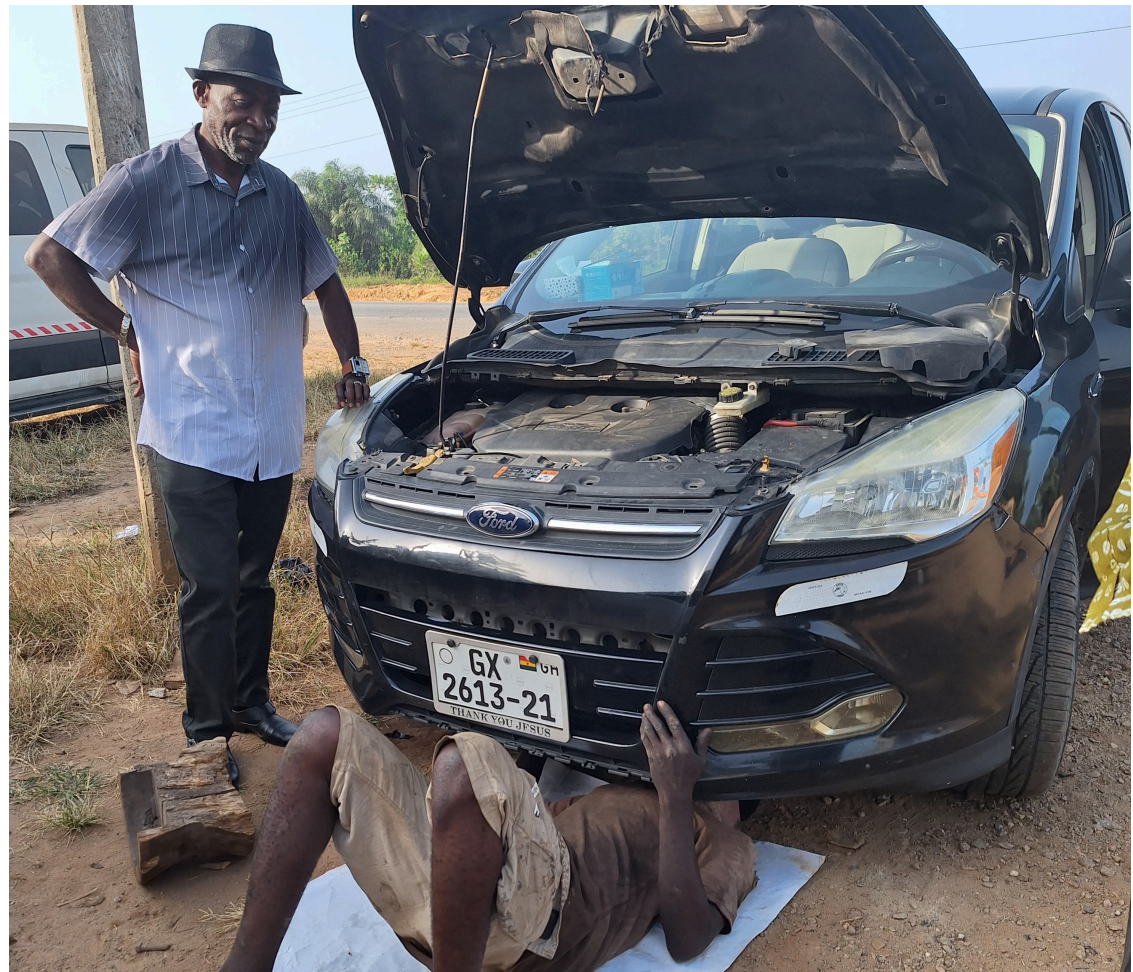
As you will see in the photos, our biggest challenge is our means of transportation!!. Because of the bad roads in our country, every time we hit the road, there are uncertainties as to what might take place. We have spent a lot of money in keeping our beautiful little Ford Escape on the road but now will need something stronger or less expensive to maintain. Our prayer and hope is to get something more spacious because our team has increased. (Preferably a seven or eight seater Toyota).

### ***CONTACT US***

***email:*** [info@enrichleadership.org](mailto:info@enrichleadership.org)  
[globalhz.org/enrich-leadership-network](http://globalhz.org/enrich-leadership-network)









*Copyright (C) 2024 Enrich Leadership Network. All rights reserved.*

You are receiving this email because you opted in via our website.

Our mailing address for donations is:

Enrich Leadership Network

PO BOX 64059

Eagan, MN 55164

Our mailing address for correspondence is:

Enrich Leadership Network/Global Horizon Inc

3300 University Ave. SE

Minneapolis, MN 55414