

FASE Living Lab Newsletter

Real, Working, and Ready to Grow

November-December 2025 Field Update



FASE Living Lab: Real, Working, and Ready to Grow

In November-December 2025, I spent three weeks in Sierra Leone to strengthen our growing Living Lab model. The visit confirmed what we hoped: The model is working, gaining trust, and supported by the community. Our next step is focused stabilization - clear systems, strong local coordination, and shared investment.

What You Should Know

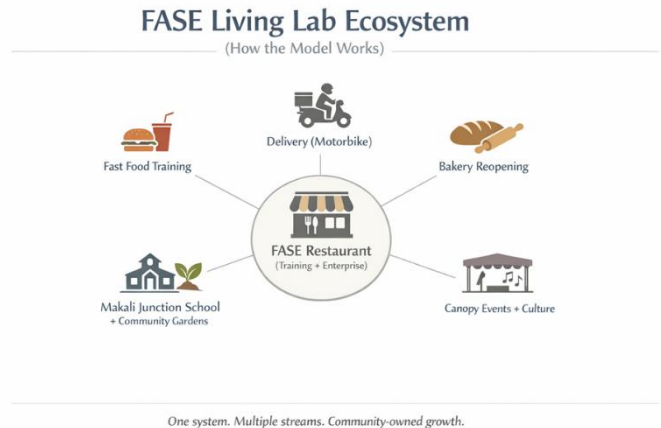
- The Living Lab ecosystem is real and viable; now it needs stabilization systems to reduce leakages and support growth.
- Brookbridge visitors affirmed we have clear direction; our next step is stabilization and growth - not reinvention.
- Makali Junction school sustainability work is active: gardens, community contributions, and classroom expansion underway.
- Crowd farming experimentation continues with local participation and next-step planning.
- The next 90 days are critical: protect funds, tighten routines, activate integrated revenue streams.

What Changed Because of This Visit (Field Verified)

- We verified that the Living Lab ecosystem is working and community-supported.
 - We decided a focused 90-day transition is needed to reduce avoidable losses and grow sales.
 - Stakeholders aligned: school and community leaders agreed on rehabilitations and sustainability steps.
 - Priorities clarified: simple systems, local coordination, and short-term bridge support.
- These are not setbacks - these are signs of a model taking shape and ready for consolidation.

Caption: Living Lab Ecosystem - How training and enterprise revenue streams connect as one system.

Narrative: The FASE Restaurant anchors a community-centered system linking training, delivery, bakery, events, school, and farms.



VALIDATION, ACTION

Brookbridge Checkpoint — A Strong Confirmation

Although we did not receive the startup-focused project, the Brookbridge visit served as a valuable checkpoint. Their feedback confirmed that FASE is not searching for direction - we have a functioning model. The message was clear: our next step is stabilization and disciplined growth, not reinvention.



Living Lab in Action: Magburaka Enterprise Hub

The FASE Restaurant remains the hub that links learning to real enterprise. The growth pathway is clear:

- Fast food routines and delivery (with a new motorbike) are driving daily sales.
- The bakery and canopy/events add incremental revenue.
- Simple cash/stock controls are reducing avoidable losses.

With Sierra Leone's inflation pressure, this discipline is now more urgent: we must grow sales while tightening systems.

Early Proof Dashboard

Early Proof - What's already happening on the ground.

Delivery Capacity Active

New motorbike ready; routines set to scale.

Bakery Rehabilitation Underway

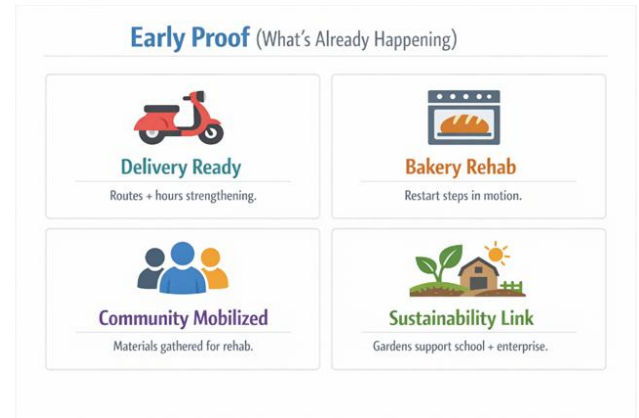
Restart planning in progress.

Community Engagement Strong

Stakeholder resources and accountability increasing.

School-Farm-Restaurant Integration

Local supply and sustainability pathways functioning.



PAGE 3 — EDUCATION, COMMUNITY, CROWDFARMING, NEEDS

Makali Junction Community School — Sustainability + Dignity

At Makali Junction, we met with community leaders to review progress on the school sustainability model:

- Vegetable gardening (women) and cassava cultivation (men) linked to local markets, with proceeds intended to support school needs.
- Safe drinking water remains a priority so children do not leave school during breaks.



Makali Junction Community School: Sustainability and Dignity

At Makali Junction, we held a community meeting and reviewed progress on the school-community sustainability model: vegetable gardening (women) and cassava cultivation (men), with market links and proceeds intended to support school needs. A key priority is safe drinking water so children do not have to leave school to find water during breaks.



Classroom Progress Update

Furnishing has begun and students are transitioning into the new classroom block from the older structure awaiting repair. When complete, the school will have six dedicated classrooms and a headmaster's office. Plans are underway for a school supplies shop expected to begin operating in Fall 2026.

Priority Needs for the Next 90 Days

Next 90 Days — Stabilize → Systemize → Grow

Increase Sales: Focused menu, faster service; delivery expansion to homes and institutions. Reduce Losses: Purchasing discipline, portion control, weekly stock checks, and reporting rhythm.

Build Revenue Streams: Canopy/events activation and bakery restart sequence.

Strengthen Leadership: Clear local roles so stability is not remote-dependent.

..



Transition Capacity

Bridge stipends + transport support for key local coordinators.

Basic cash/stock rollout: logs, lockbox, weekly counts, reporting rhythm.

Bakery restart starter inputs.

Delivery system strengthening: hours, routes, order discipline.

School water access pathway: assessment + first steps.

Call for Collaborative Action (Three Lanes)



